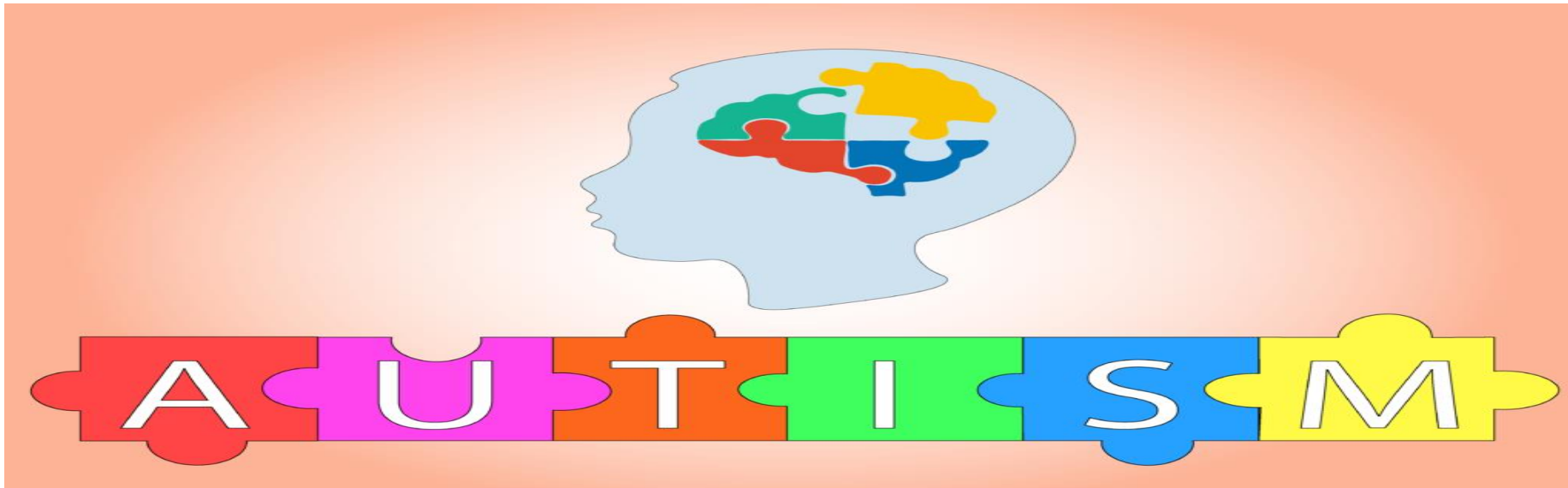


What is autism?

By James and Freya

Autism, or **autism** spectrum disorder (ASD), refers to a broad range of conditions characterized by challenges with social skills, repetitive behaviors, speech and nonverbal communication. According to the Centers for Disease Control, **autism** affects an estimated 1 in 100 children today.



Harvey, 18, has Prader-Willi syndrome, septo-optic dysplasia, **autism** and a learning disability. He plans to use his new position to act as a role model to young people **with** complex needs and educate the public to help tackle stigma and online bullying.







Chris Peckham

TV presenter

Winter/Springwatch

He is an actor

What is special about autism?

Autism is one of the most common developmental disabilities. People with **autism**, also called **autism** spectrum disorder (ASD), have differences in the way their brains develop and process information. As a result, they face significant communication, social, and behavior challenges.

Is autism a special need?

Special needs can range from people with **autism**, Asperger syndrome, cerebral palsy, Down syndrome, dyslexia, dyspraxia, blindness, deafness, ADHD, and cystic fibrosis. They can also include cleft lips and missing limbs.